

# Security inks

Linx security inks have been developed to help manufacturers of high-value goods counter the threat of counterfeiting, and in addition provide an unobtrusive method of tracking products through the production and packing process. For a full profile of each ink, including printer compatibility, refer to the 'Summary of the Linx range of dye-based inks' datasheet.




---

## ■ Clear UV-readable 1121

---

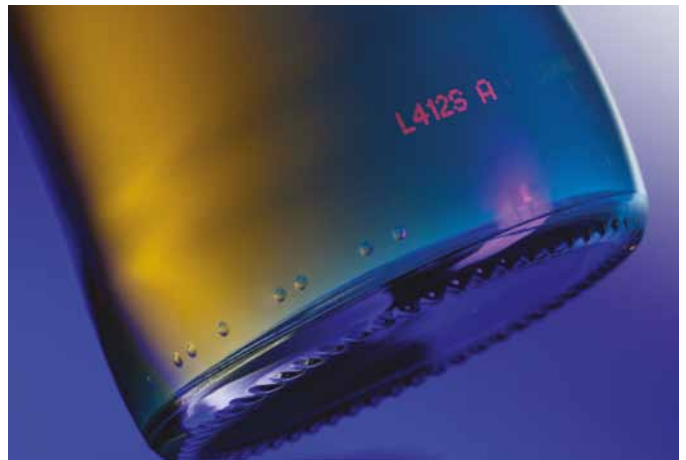
## ■ Clear security 3160

---



### ■ Clear UV-readable 1121

Developed for discreet coding applications such as anti-counterfeiting or internal traceability, for example in the high value goods, alcohol, tobacco and pharmaceutical industries, as well as software and music. This ink fluoresces blue under UV light but is nearly invisible in normal light. It is also fast-drying and water resistant when dry, but can be removed with alkali for container re-use.



### ■ Clear security 3160

Developed for discreet coding applications such as anti-counterfeiting or internal traceability, for example in the high value goods, alcohol, tobacco and pharmaceutical industries, as well as software and music. This ink fluoresces red under UV light but is nearly invisible in normal light. It is also fast-drying and water resistant when dry. The distinctive red colour is achieved using a unique red dye, making imitation of the code even more difficult.



## Ordering pack options

INK FEATURES	INK / SOLVENT BASE	DRYING TIME	RECOMMENDED LINX SOLVENT	ORDERING PACK OPTIONS			
				5 Litre	1 Litre	EasiPacks	Combipacks
Clear UV-readable 1121	MEK	1-2 seconds	1590	Yes	Yes		Yes
Clear security 3160	Ethanol / Acetone	1-3 seconds	3560	Yes	Yes		Yes

## Ink handling guidelines

LinX takes great care to ensure that none of their CIJ inks and solvents are classified as 'Toxic to Health' or 'Environmentally Damaging'.

Details of safety precautions for handling these fluids can be found on the relevant Safety Data Sheets.

## Ordering options for Linx inks and solvents

### Standard 5 litre packs

(10 x 0.5 litre bottles/cartridges of either ink or solvent) for customers requiring at least 5 litres of ink per year.

### 1L packs

(2 x 0.5 litre bottles/cartridges of ink) for customers using less than 2 litres of ink per year.

### EasiPacks

(10 x 0.5 litre bottles/cartridges of ink in 1 litre packs) for customers requiring the flexibility to subdivide a 5 litre box.

### Combipacks\*

(4 x 0.5 litre bottles of ink and 6 x 0.5 litre bottles of matching solvent) for customers requiring less than 5 litres of ink per year.

\*Not available for the 8900 Series of printers

## Ink and solvent storage and use

Storage:

Between +15°C and +25°C

Operating temperature:

Between +5°C and +45°C

## Ink overviews

For advice on individual applications, please consult Linx or your local Linx Distributor.